



519 REACH



- 5,500 LBS. CAPACITY
- 18 FEET 7 INCHES OF LIFT HEIGHT
- COMPACT, MANEUVERABLE DESIGN
- EXCELLENT OPERATOR VISIBILITY
- ROOMY, COMFORTABLE OPERATORS MODULE
- FULL RANGE OF ATTACHMENTS AVAILABLE
- ERGONOMIC CONTROLS
- NORTH AMERICAN MANUFACTURED

LOAD LIFTER FEATURES DO WORK FOR YOU

PERFORMANCE

Rated Capacity	5,500-lb	2,495-kg
Maximum Lift Height	18-ft 7-in	5.7-m
Load at Max Height	4,400-lb	1,996-kg
Maximum Forward Reach	10-ft 10-in	3.3-m
Load at Max Reach	1,900-lb	862-kg
Lift Speed (Boom Retracted)	Up 7.2 sec	
Lift Speed (Boom Retracted)	Down 5.6 sec	
Boom Speed Extended	7.2 sec	
Boom Speed Retracted	5.0 sec	
Top Travel Speed (4-Speed)	15 mph	24.1 km/h
Drawbar Pull (Loaded)	10,300-lb-ft	46.7-kN
Outside Turning Radius	126-in	3.2-m
Operating Weight	10,400-lb	4,717-kg

STANDARD SPECIFICATIONS

Engine

Make and Model	Deutz TD2.2 L3
No. of Cylinders	3
Displacement	134 cu in / 2.2 L
Gross Power Basic	60 hp / 44.5 kW
Maximum Torque @ 1600 rpm	151-lb-ft / 205 Nm
Fuel Tank Capacity	18.5 gal / 69.3 L

Transmission

- Hydrostatic

Axles

- High bias limited slip differential on front axle.
- Planetary on front and rear axles.

Brakes

- Service brakes are inboard wet disc brake on front axle.
- Parking brakes are wet disc spring-applied hydraulic release.

Tires

Standard	12 x 16.5 Pneumatic
Optional	12 x 16.5 Foam-Filled
	12 x 16.5 Foam-Filled
	33 x 12-20 Solid Non-Marking
	33 x 16 Turf

Cab

- Adjustable suspension seat
- Certified ROPS/FOPS structure
- Horn
- High Visibility Orange Seatbelt
- Integrated Arm Rest
- Single Joystick Proportional Controls
- Rear View Mirrors

Steering 4-Wheel

- Operator selectable 4-wheel circle, 4-wheel crab, 2-wheel front.

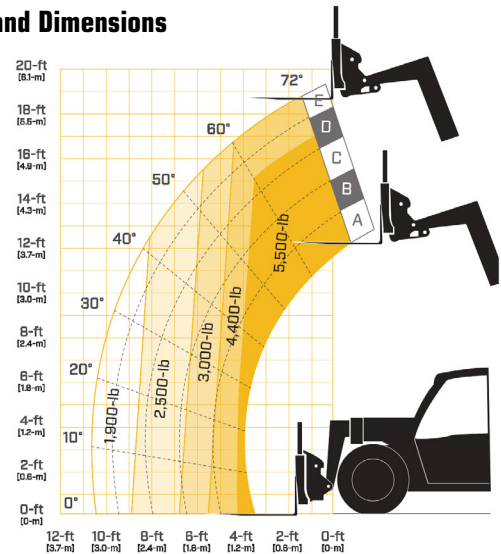
Instruments and Standard Features

Auxiliary Hydraulics & Carriage Tilt on Joystick	Inching
Backup Alarm	LCD Display for diagnostics
Continuous Auxiliary Hydraulics	Lifting Lug
Engine Heater	Framer/Loader Switch
Fuel Gauge	Mechanical Coupler
Glow Plugs	Temperature Gauge
Hourmeter	Speedometer
	Tachometer

Hydraulic System-Implement

- Capacity 18 gal / 68 L
- Max. Auxiliary Flow to the Boom Head 18 GPM
- Single-section gear pump.
- Auxiliary hydraulics used for all attachments equipped with cylinders or other hydraulic components.

Load Chart and Dimensions



Dimensions

Machine Length	151.5-in	3850-mm
Machine Width	72-in	1830-mm
Wheelbase	92.5-in	2350-mm
Machine Height	76-in	1928-mm
Ground Clearance	10.8-in	274-mm

(All dimensions are approximate)

ACCESSORIES & OPTIONS

- Air Conditioning
- Battery Disconnect Switch
- Boom Prop
- Brick Guard Package
- Enclosed Cab with Heat
- Fenders
- Fixed Drawbar/Drop Pin Hitch
- Hydraulic Universal Skid Steer Coupler
- LED Worklight Package
- LSI
- Mechanical Universal Skid Steer Coupler
- Multifunction Display with Reversing Camera & Electronic Load Charts
- Reverse Sensing
- Road Light Package
- Seatbelt Engagement & Operator Presence
- Skylight/Rear Wiper Package
- Tilt Steering (open cab)
- White Noise Backup Alarm

ATTACHMENTS

Standard Carriage	48-in	1.2-m
Side-Tilt Carriage	48-in	1.2-m
Side Shifting Carriage	48-in	1.2-m
Dual Fork Positioning Carriage	48-in	1.2-m
Pallet Forks	2-in x 4-in x 48-in	51-mm x 102-mm x 1.2-m
General Purpose Bucket	73-in, 1.0-cu yd	1.8-m, 0.76-m³
Light Material Bucket	72-in, 1.7-cu yd	1.8-m, 1.29-m³
Grapple Bucket	72-in, 1.0-cu yd	1.8-m, 0.76-m³
Lifting Hook		
Universal Skid Steer Adapter		

KEY FEATURES

- Advanced control system that enables options such as Load Stability Indication (LSI), Seatbelt Engagement and Operator Presence (SEAOP), multifunction display with backup camera and electronic load charts, and improved diagnostics.
- Deutz 2.2L 60 hp diesel engine provides optimized machine performance and improves fuel efficiency.
- Electric over hydraulic joystick offers greater multifunction capability including auxiliary hydraulic function and attachment tilt.
- Standard LED Motion/Amber Beacon with ClearSky Smart Fleet™ Connectivity Hardware



This information contained herein is general in nature and not intended for specific application purpose. Load Lifter reserves the right to make changes in specifications, make improvements, or discontinue manufacture at any time without notice or obligation.

LOAD LIFTER MANUFACTURING LTD.
 3 Anderson Blvd., Uxbridge, Ontario, Canada, L9P 0G5
 Tel. 905-642-9756, Fax. 905-640-1437, www.load-liftermfg.com, info@load-liftermfg.com